

Welcome from the CMBEC39 Organizing Committee

Message from CMBEC39 Organizing Committee Chair, Kelly Kobe



On behalf of the 2016 CMBEC39 Organizing Committee, I'm excited to welcome you to Calgary, the home to the world renowned "Calgary Stampede – The Greatest Outdoor Show on Earth" and the gateway to the magnificent Canadian Rockies!

For the past year, the organizing committee have put in an incredible amount of time and effort into planning and bringing together an excellent program for which you are about to participate. I would like to take this opportunity to express my thanks to all members of the committee for their endless efforts, as well as Natalia Kaliberda and the Willow Group for all their hard work & support and ensuring we stayed on schedule.

With a full line up that covers the Clinical Engineering, Academic and Biomedical Technology streams including all the sold out Continuing Educational courses, it might be challenging deciding on which sessions to attend. We also wanted to ensure there is plenty of time for networking with colleagues from across Canada, so we have arranged a Meet & Greet Reception on the eve of the conference, an Opening Reception, Atrium Social, a Cocktail Hour event, and of course the Dinner Banquet, not to mention the time between sessions including lunch and touring through the vendor exhibit hall.

We also want to thank all of the vendors who are supporting the conference this year by participating with the exhibit hall and sponsorship opportunities, without their support this conference would not be possible.

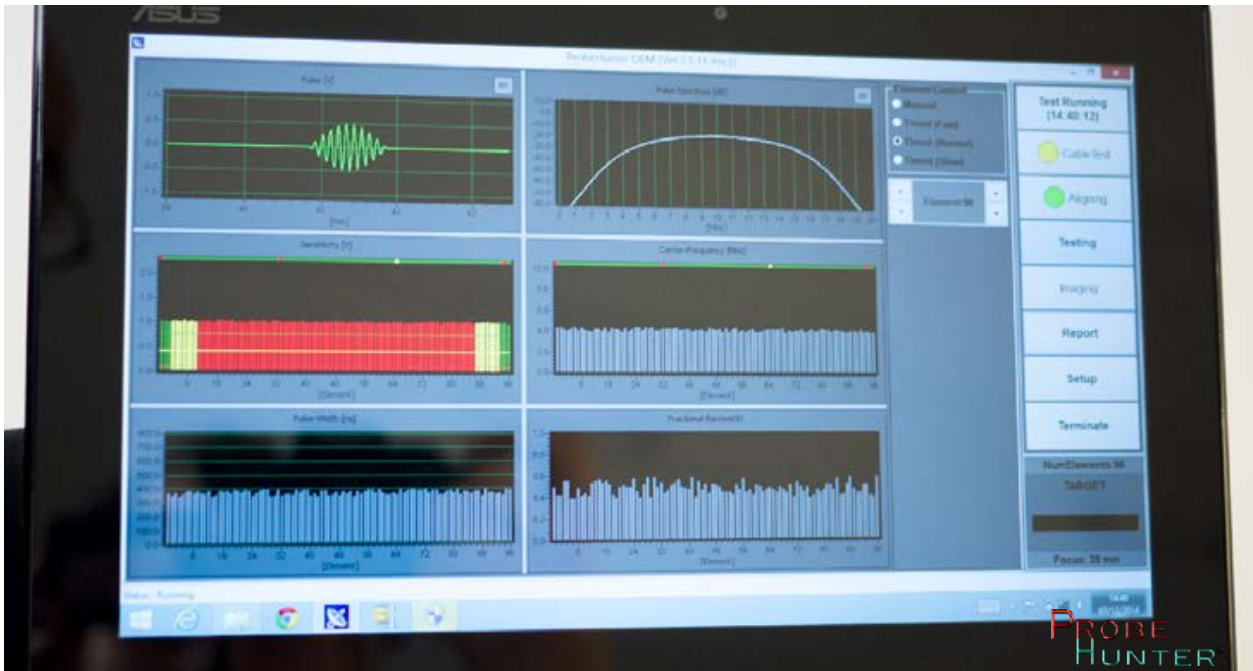
With such a busy schedule we're still hopeful that you'll be able to find some time to see the sights and attractions that Calgary and surround area has to offer!

I look forward to seeing you all during the conference.

Sincerely,

Kelly Kobe, P.Tech(Eng.), CBET(c)

CMBEC39, Organizing Committee Chair



Quality Assurance of Ultrasound Probes

ProbeHunter is a multi-brand testing device. The product is the result of Scandinavian innovation and a world-wide network of engineers and medical professionals.

ProbeHunter is a multi-brand, real-time testing system for ultrasound probes, developed by a worldwide network of engineers and medical professionals. It's a pioneer device, enabling hospitals and ultrasound dealers to ensure the quality of the probes. Why is it important to test probes? Transducers are highly sensitive instruments, not only is the lens extremely vulnerable to rough handling, but probes' insides contain hundreds of crystals - each required to function perfectly in order to provide a correct medical diagnosis.

The most common reasons for faulty probes are rough handling (such as accidentally squeezing the cable or shocks during transport), using the wrong gel and/or cleaning detergent. A common misconception is that these damages are visible on the ultrasound screen, in reality, they

are not. "Many times doctors believe they can catch a faulty probe through the images, this is not the case," says Bjorn Segall, CEO of ProbeHunter Intl.

ProbeHunter provides dynamic testing without interrupting the regular work flow and everyday usage of probes, its adapters are designed to fit all major brands on the market - and given its living nature - ProbeHunter is able to test every new probe as soon as it's on the market. The team behind ProbeHunter has more than three decades of experience in ultrasound and has been testing probes in Scandinavian hospitals for the last 13 years.

**PROBE
HUNTER®**
www.probehunter.com